

Traditional crane series | FARMA®

C3.8

C4.2

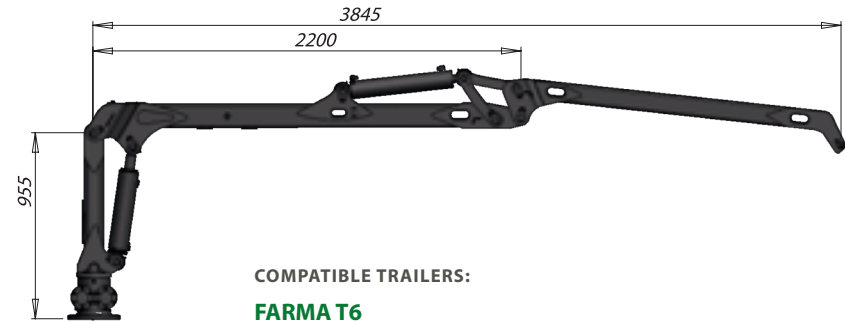
C4.6S

C4.6D



	C3.8 G2	C4.2 G2	C4.6 S G2	C4.6 D G2
Reach (m)	3.8	4.2	4.6	4.6
Lifting torque gross (kNm)	24	24	31	31
Grapple size	0.12/0.16	0.12/0.16	0.12/0.16/0.20	0.12/0.16/0.20
Rotator	3	3	3	3
Slewing torque (kNm)	5	5	5	10
Slewing angle (degrees)	370	370	360	360
Working pressure (bar)	190	190	190	190
Recommended flow (l/min)	10-35	10-35	20-50	20-50
Telescopic stroke length	–	0.6	–	–
Lifting force at 4 m excluding grapple and rotator	–	530	630	630
Lifting force at full length (excluding grapple and rotator) (kg)	530	480	610	610

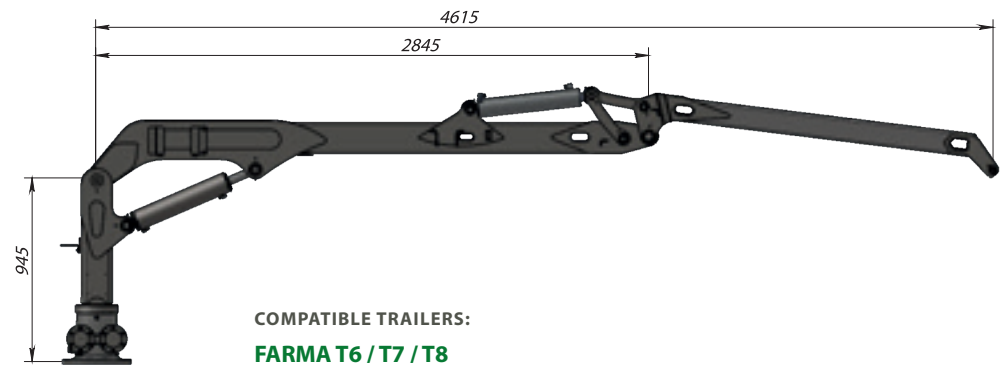
C3.8 G2



C4.2 G2



C4.6S / C4.6D G2



C5.1

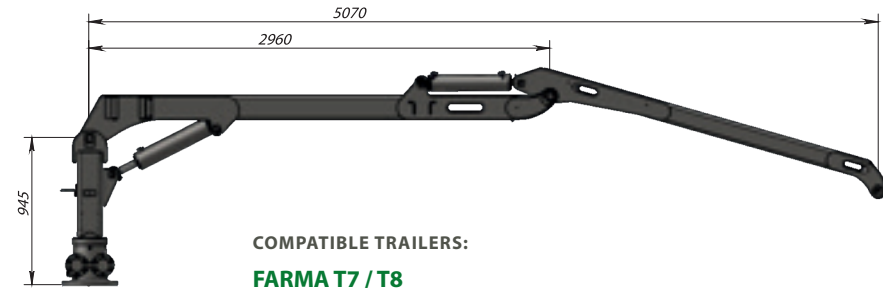
C5.3



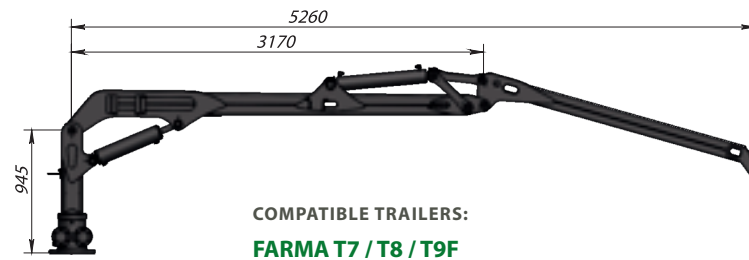
FARMA 5.3 G2

	C5.1	C5.3 G2
Reach (m)	5.1	5.3
Lifting torque gross (kNm)	31	39
Grapple size	0.12/0.16/0.20	0.12/0.16/0.20
Rotator	3	3
Slewing torque (kNm)	8.8	10
Slewing angle (degrees)	360	360
Working pressure (bar)	190	190
Recommended flow (l/min)	20-50	20-50
Telescopic stroke length	–	–
Lifting force at 4 m excluding grapple and rotator	830	810
Lifting force at full length (excluding grapple and rotator) (kg)	490	615

C5.1



C5.3 G2



C6.3

C6.7

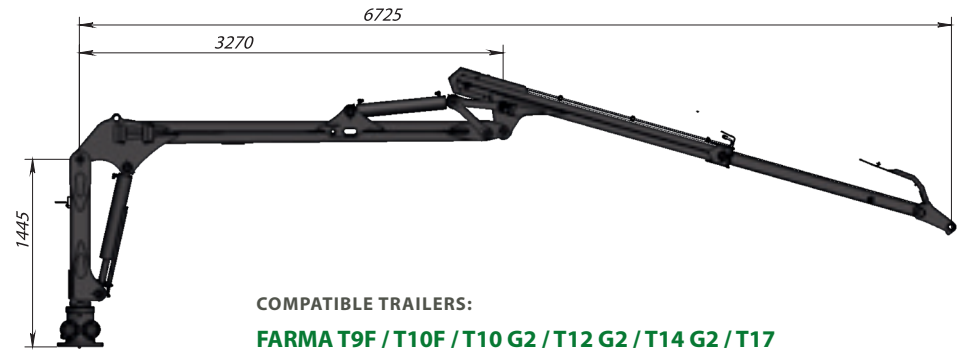


	C 6.3 G2	C 6.7 G3
Reach (m)	6.3	6.7
Lifting torque gross (kNm)	39	42
Grapple size	0.12/0.16/0.20	0.16/0.20
Rotator	3	3
Slewing torque (kNm)	10	10
Slewing angle (degrees)	360	360
Working pressure (bar)	190	190
Recommended flow (l/min)	20-50	20-50
Telescopic stroke length	1.1	1.45
Lifting force at 4 m excluding grapple and rotator	790	760
Lifting force at full length (excluding grapple and rotator) (kg)	500	490

C6.3 G2



C6.7 G3



C7.2

C8.5



FARMA 8.5D

	C7.2 G2	C8.5 G2
Reach (m)	7.2	8.5
Lifting torque gross (kNm)	62	62
Grapple size	0.20/0.24	0.20/0.24
Rotator	4	4
Slewing torque (kNm)	16	16
Slewing angle (degrees)	380	380
Working pressure (bar)	190	190
Recommended flow (l/min)	40-70	40-70
Telescopic stroke length	1.45	2.9
Lifting force at 4 m excluding grapple and rotator	1200	1100
Lifting force at full length (excluding grapple and rotator) (kg)	700	520

C7.2 G2



C8.5 G2



X-CEL crane series | FARMA®

C5.0

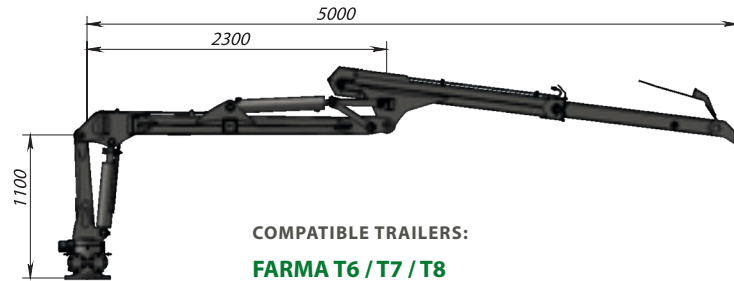
C8.0

C10.2



X-CEL	C5.0	C8.0	C10.2
Reach (m)	5	8	10.2
Lifting torque gross (kNm)	34	84	84
Grapple size	0.12/0.16	0.24/0.28	0.24/0.28
Rotator	3	4/5.5/6	4/5.5/6
Slewing torque (kNm)	10	24	24
Slewing angle (degrees)	360	366	366
Working pressure (bar)	190	210	210
Recommended flow (l/min)	20-50	50-120	50-120
Telescopic stroke length	1.1	1.97	3.93
Lifting force at 4 m excluding grapple and rotator	690	1415	1300
Lifting force at full length (excluding grapple and rotator) (kg)	560	790	500

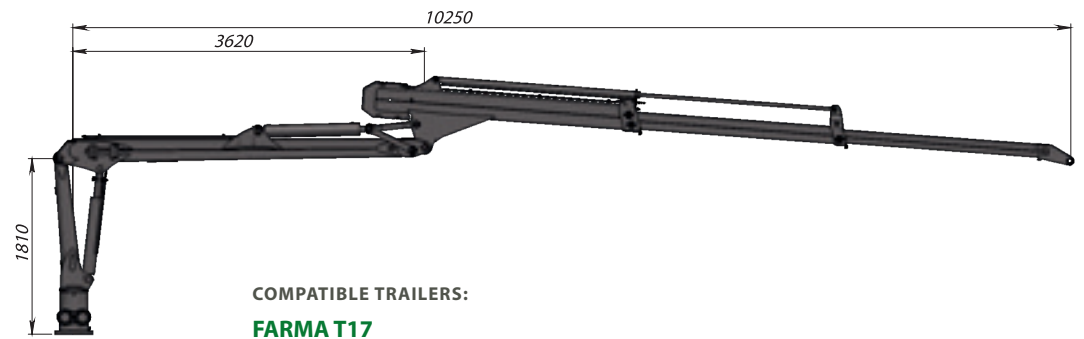
C5.0 X-CEL



C8.0 X-CEL



C10.2 X-CEL



Z-Crane series | **BIGAB**®

Z 6.6

Z 8.0

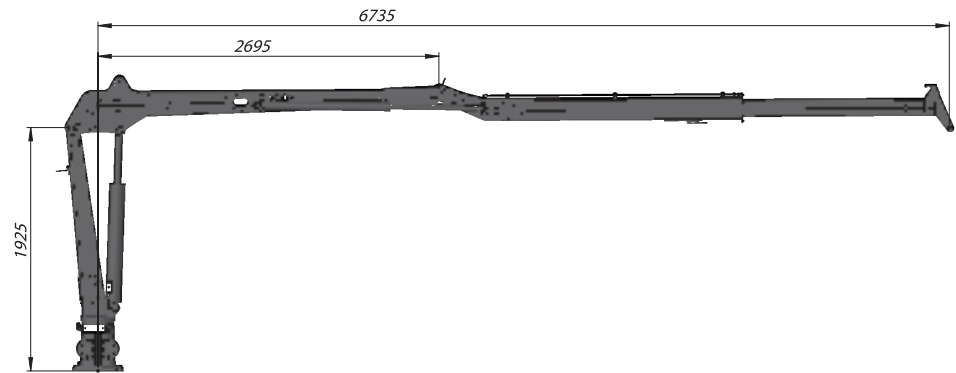
Under the BIGAB brand we offer Z-crane in the sizes 6.6 and 8.0 m. A quickly unfolding and compact crane with really good performance. The crane is designed to be parked in front of the tower in the transport position to increase visibility from the cab during tipping and exchange.



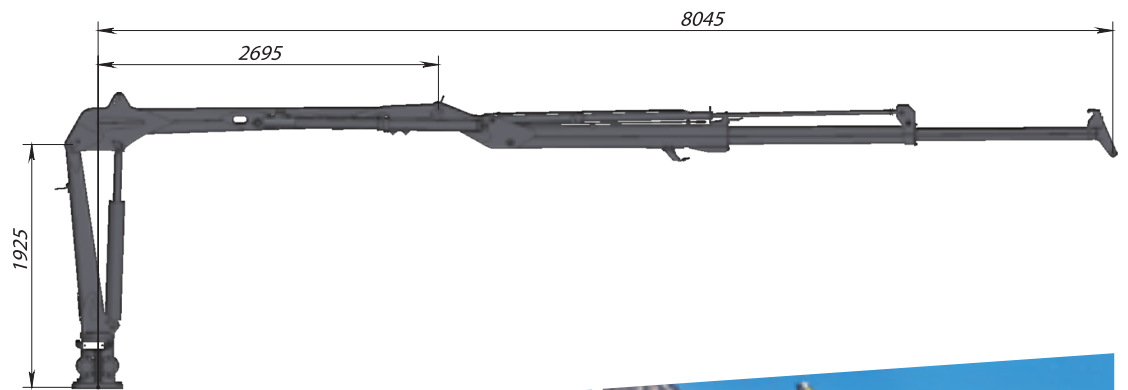
	Z 6.6	Z 8.0
Reach (m)	6.6	8.0
Slewing angle (°)	380	380
Telescopic stroke length (m)	1.45	2.65
Weight including grapple bucket 160 l/Crane weight (kg)	1 012/820	1 062/870
Weight including grapple bucket 200 l/Crane weight (kg)	1 022/820	1 072/870
Weight including grapple 0.20*/Crane weight (kg)	952/820	1 000/870
Lifting capacity at max reach (excluding grapple/rotator) (kg)	750	590

*Weight including grapple and rotator.

Z 6.6



Z 8.0





MULTI-LEVER CONTROLLERS

The valve assembly for 5, 6 and 7 levers are a fully cast block with a low weight, while the 8-lever assembly consists of sections and is heavier. 5 functions can be used if the crane does not have extension. 6 functions are needed if there is one extension. Add support legs, and 7 functions are needed. 8 functions are needed if the crane is equipped with support legs and extension. The illustration shows the valve assembly, 7 levers.



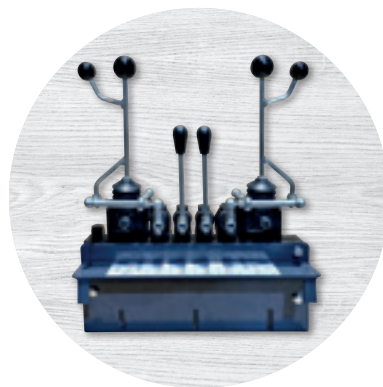
2+3 LEVER/2+4 LEVER

The valve assemblies appear similar at first glance, but differ significantly in weight and the number of levers. 2+3 levers are fully cast and 10 kilos lighter than the 2+4 levers, which are assembled with different components. On the 2+3 levers the support legs and grapple are controlled by the three centre levers. On the 2+4 levers model there is also an extension and therefore there are four levers in the middle. Illustrated is the 2+4 lever model.



ELECTRICAL ON/OFF CONTROLLER

Our most popular controller, primarily because of its low weight and price, is our electrical on/off assembly. The controller basically consists of two parts. The part of the controller that controls the electrical functions is mounted in a protective box on the crane. The other part is a 4-function controller with buttons, which lifts into the cab. The functions controlled by the electrical on/off controller are the support legs, grapple and where appropriate extension.



2+2 LEVER XYZ (60L/80L)

8-function valve with X-Y-Z controlling of the coordinate levers. The Z-function on the lever means that the valve is also equipped with a torque function. The X-Y-Z valve simplifies operating the crane, because all the functions can be controlled with 2 coordinate levers. The lever in the middle controls the support legs. The valves are offered in 2 sizes, 60l/min and 80l/min



VALVE BLOCK



FLOW SHARING VALVE

The flow sharing valve means that the oil is guided where it is needed, instead of going the “easiest way” as on less advanced valves. Valves controlled with mini joysticks provide proportional controlling for all functions. It has far more possible adjustments to suit the operator. The valve also has a load-sensing function.



ELECTRICAL PROPORTIONAL CONTROL WITH RADIO CONTROL

Tired of hydraulic hoses that need to be transferred to the tractor? Electrical proportional control with radio could be what you need. Electrical cables between the trailer and tractor, plus one hydraulic hose for pressure and one for return from the tractor. The controller is available with control via so-called paddles or joysticks, and it is programmable to suit the operator. Pictured is radio control with joysticks.

Crane accessories | FARMA®



HYDRAULIC SERVO

Hydraulic servo (so-called low pressure servo) which is controlled with the joystick as with electrical proportional control. The difference between the systems, where in both cases the valves are mounted on the crane, is that electrically controlled proportional systems are handled via electrical cables, while control on hydraulic servo systems is handled through a low pressure system via hoses. The hydraulic servo solution requires more assembly work in the cab.



ELECTRICAL PROPORTIONAL CONTROL WITH JOYSTICK

Fewer hydraulic hoses to lift? Electrical proportional control could be what you need. Contact between the trailer and tractor takes place via an electrical cable and one hydraulic hose for pressure and one for return from the tractor. The crane is controlled with two joysticks mounted inside the cab. As the valves are proportionally controlled, control is performed with sensitivity in the joysticks as opposed to an electrically on-off controlled valve. The controlling is also programmable.



ELECTRICAL PROPORTIONAL CONTROL WITH TOUCH SCREEN

In addition to the advantages of electrical proportional control, the system here is supplemented with a CANBUS system with touch screen and joysticks. With the help of the screen you can adjust all the speeds of the crane so that they are optimised for you. The system can easily switch between different operators so that all users can have their own favourite settings on the crane.

FARMA GRAPPLE RANGE

Crane accessories | FARMA®



GRAPPLE G2

The affordable FARMA grapple series Generation 2 has become very popular. The claw geometry makes it easier to fill the grapple, and to “dig” better in the timber. The grapple range is available in the sizes 0.12, 0.16, 0.20, 0.24 and 0.28. See the matrix on page 29 for information on which grapple is standard on respective trailer models, and which alternatives are available.



BRUSH GRAPPLE G2

FARMA has under the G2 series developed brush grapples to simplify handling brush when working in the forest. This is because the slash (limbs and tops) do not fasten as easily in the grapple. The brush grapple is available in three models, 0.12, 0.16 and 0.20.



GRAPPLE BUCKET G2

In the Generation 2 series you will find that our grapple buckets have been developed in two sizes, 160 litres and 200 litres, depending on the different applications and working method. The existing grapple on the crane is replaced with the grapple bucket. Clearing ditches and loading/unloading of different materials such as soil, gravel etc. are some of the applications.



INSERT BUCKET G2

Insert buckets are an easy and cost-efficient way to supplement the grapple for loading gravel and clearing ditches, etc. The insert buckets are easy to apply on the crane's existing FARMA G2 grapple. Insert buckets are available for the G2 grapple models 0.12, 0.16 and 0.20.



GRAPPLE DAMPER

The FARMA grapple damper simplifies working with the grapple. It stabilizes the swinging of the grapple. The grapple damper is mounted between the crane and rotator. The grapple damper has increased in popularity as many believe it assists working with the grapple loader. Can be ordered as an accessory. Standard on larger cranes.



OTHER CRANE ACCESSORIES

Crane accessories | FARMA®



CRANE LIGHTING

FARMA crane lighting is available as an accessory for those customers who require this. The crane lighting consists of two LED spotlights mounted on each side of the pillar. The lighting can be retrofitted, but it is economically beneficial to order these directly when purchasing the crane.



WINCH

FARMA now offers two completely new models of radio controlled winches in its product range. Radio control makes the work easier on the body, but above all it makes it safer. The winch is available in two models. A smaller variant for the 3.8 m/4.2 m crane with a 5 mm wire and a length of 30 m, and a model from the 4.6 m crane and upwards with a 6 mm wire and a length of 35 m as standard.



DAMPER SLEWING/LIFTING

Do you want to drive smoother and with that more comfortable? Do you want to protect the machine's build and reduce maintenance? A damper designed for slewing, lifting and lowering could be what you need. The damper has a design where the oil, via the accumulator, dampens rapid slewing and boom movements. The degree of damping is easily adjustable.



3-POINT

If the crane is to be mounted in the three-point on the tractor, a three point attachment is needed in which to screw the crane. The attachment is available in different models, depending on the size of the crane. Important! If you need floating position functions on the crane when mounted on the tractor, these are not included in the crane's standard equipment and must be ordered as an accessory.



FLOATING POSITION

When a crane is used mounted on the tractor, the floating position functions must be on the crane if the grapple is put down on a following trailer. This is not included as standard, but must be ordered as an option. All valves can be supplemented with floating position functions.